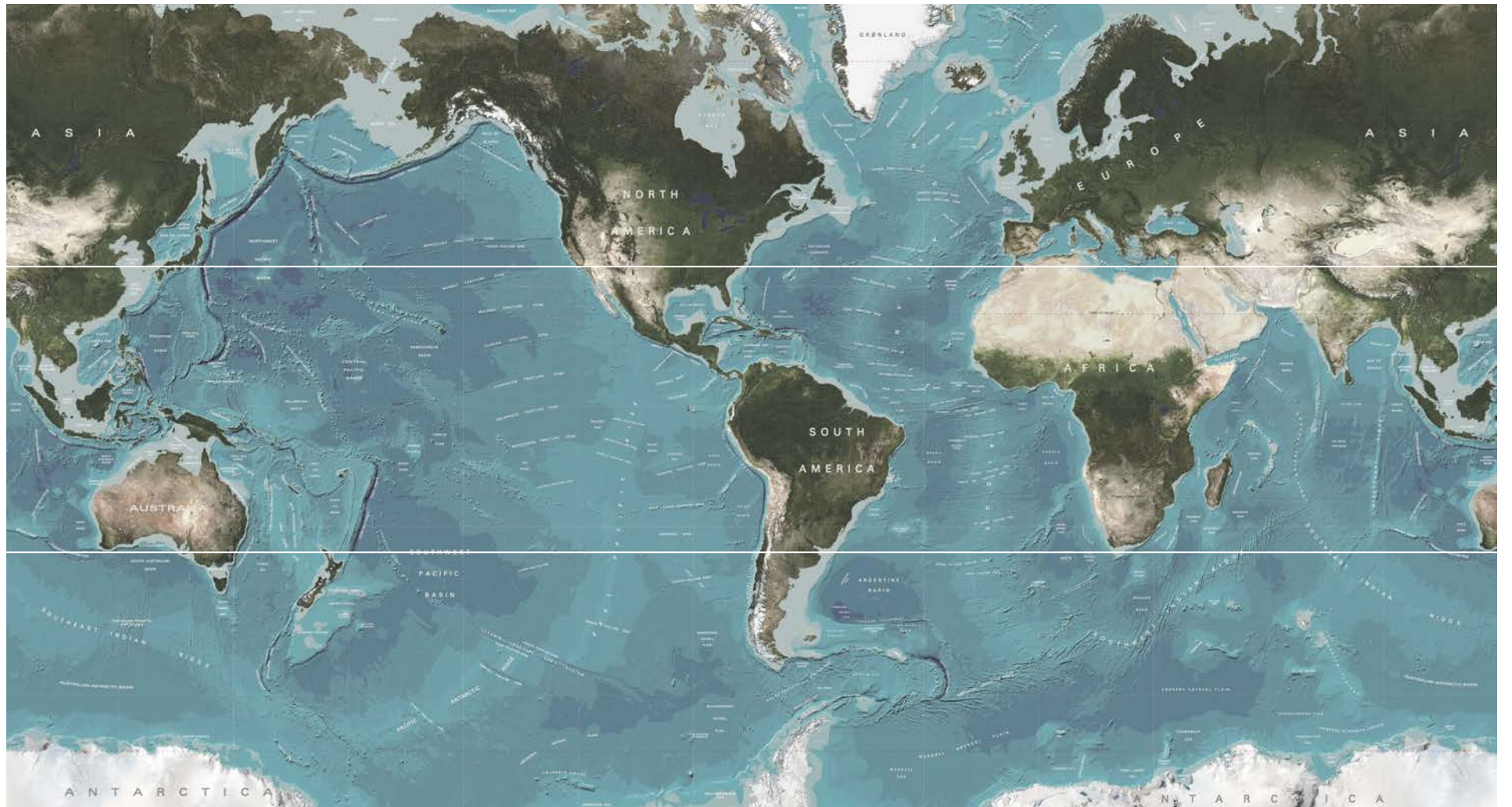
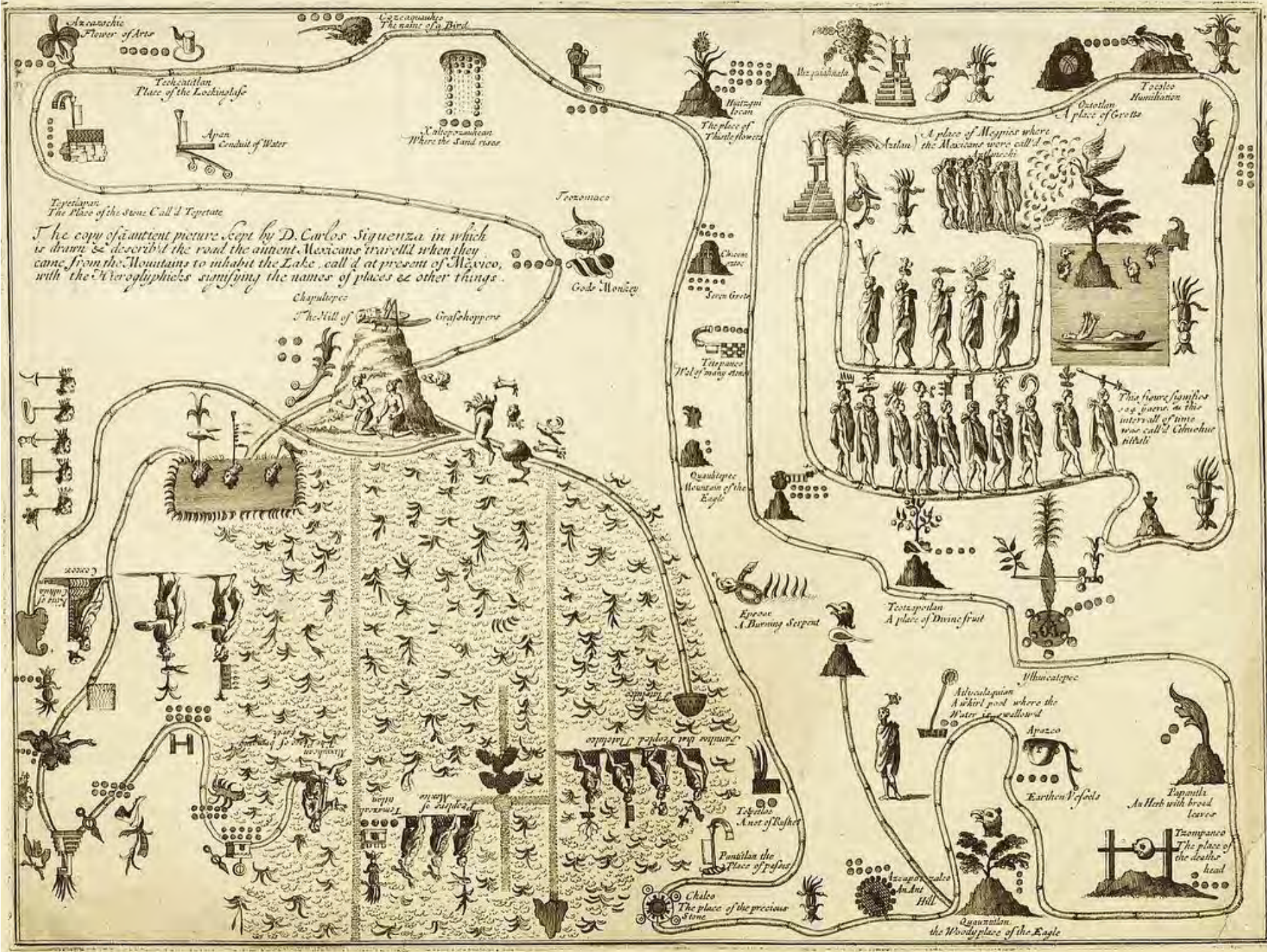


**Tropical Botanical Urban
Landscapes**
IALE 2019
Botanical City





Aznanche
Flower of Arts

Caxcaguasque
The name of a Bird

Teokan
Place of the Looking-glass

Apan
Conduit of Water

Colap
Where the Sand rises

Huasteca
The place of
The flowers

Quetzal
A place of Geese

Taclos
Humiliation

Tepeyan
The Place of the Stone Call d Tepeate

The copy of an ancient picture kept by D. Carlos Sigüenza in which is drawn & described the road the ancient Mexicans travelled when they came from the Mountains to inhabit the Lake, call'd at present of Mexico, with the Hieroglyphicks signifying the names of places & other things.

Tzozomaco

Gods Monies

Chapultepec

The Hill of

Grasshoppers

Chicon
Seven Geese

Tlapaco
Hill of many dunes

Quauhtec
Mountain of the Eagle

Epeac
A Burning Serpent

Totapopan
A place of Divine fruit

Whacatepec

Ahuacalagan
A whirl pool where the
Water is swallow'd

Apanco

Earthen V-soots

Tapimila
A Herb with broad
leaves

Tzompaco
The place of
the death
head

Chalco
The place of the precious
stone

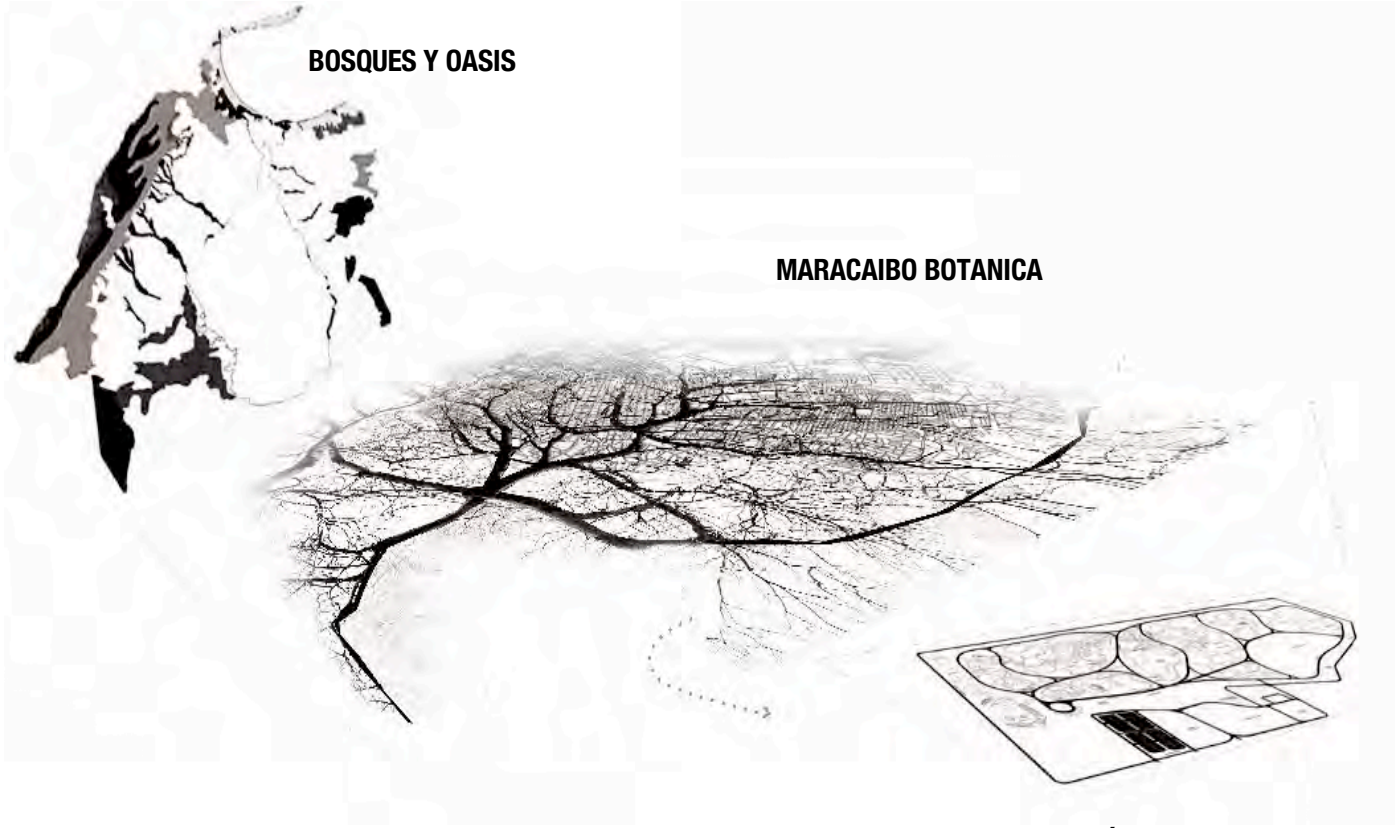
Tzucacatlan
A Hill

Quauhtlan
the Woody place of the Eagle



1. Biological, cultural, and programmatic connectivity across scales of space and time.





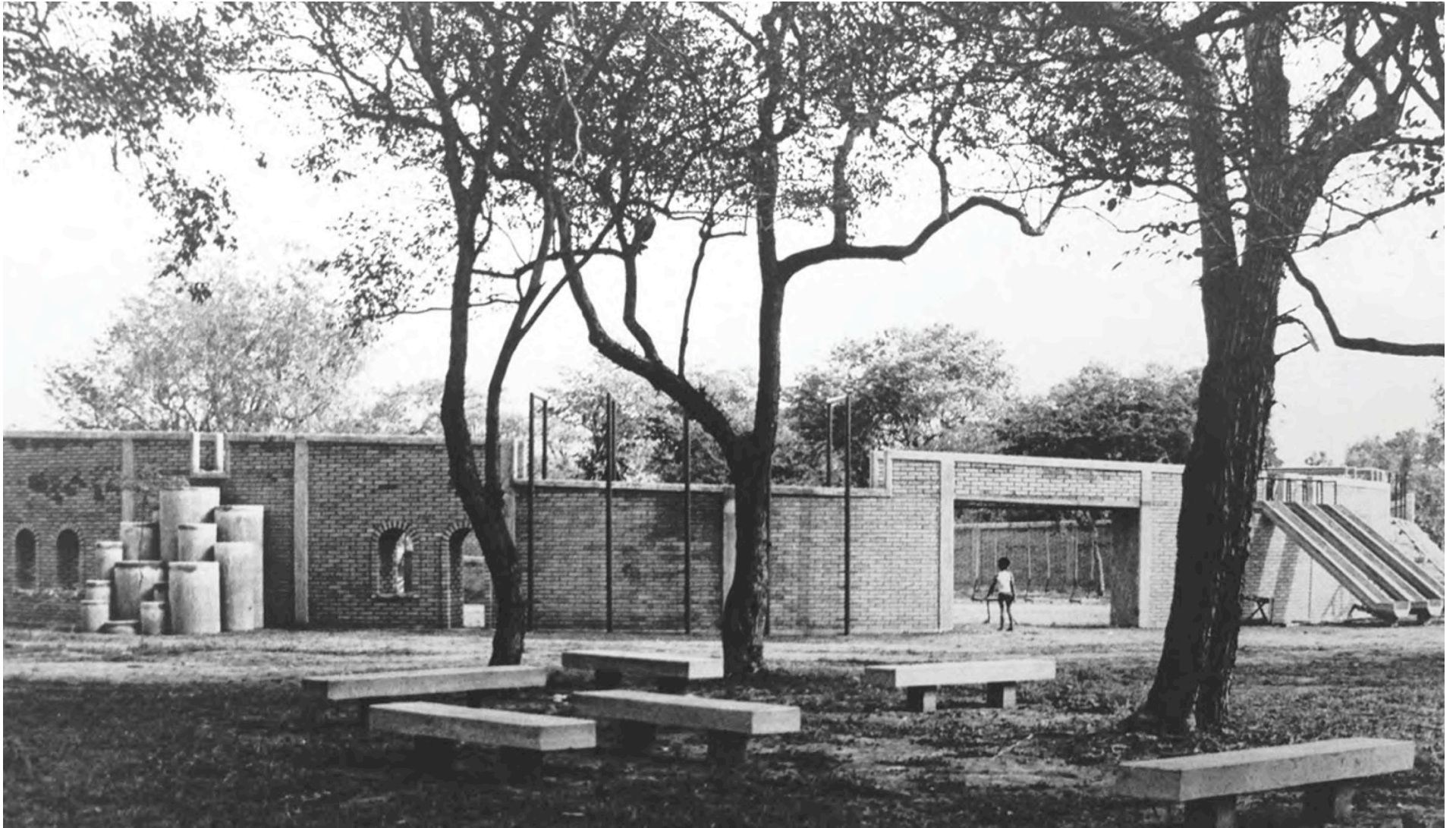
BOSQUES Y OASIS

MARACAIBO BOTANICA

EL JARDÍN BOTANICO

COSMOS BOTANICOS

2. Moments of legibility and pedagogical intensity in the urban landscape/memory and restoration opportunities.





“I can always resort to expose absurdity, denouncing it with all my energy. I can rely on the fact that someone with the power to make decisions may listen; moreover, I am faithful that human beings will become conscious that they do not reign over an eternal Nature. On the contrary, they depend of Nature for their own equilibrium and survival.”



3. Biological and urban morphological diversity/ homogeneous solutions are not sustainable.






 lago: <5%
 suelo: 5.83 ha > 95%
desertica autóctona

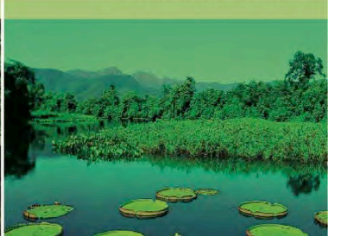
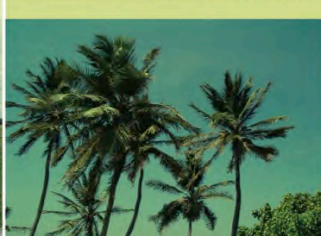

 lago: <5%
 suelo: 4.05 ha > 95%
desertica exótica


 lago: 1.38 ha . 15%
 suelo: 7.31 ha . 85%
sabana monocotiledóneas arborescentes


 lago: 0.50 ha . 88%
 suelo: 5.45 ha . 12%


 lago: 1.83 ha . 25%
 suelo: 7.16 ha . 75%
bosque humedo autóctono


 lago: 0.76 ha . 25%
 suelo: 2.90 ha . 75%
bosque humedo exótico



4. Performative management strategies/beyond autocracy.



5. Physical and programmatic flexibility to allow for transformative spontaneity/no need to control it all/ expeditions within the city / urban explorers





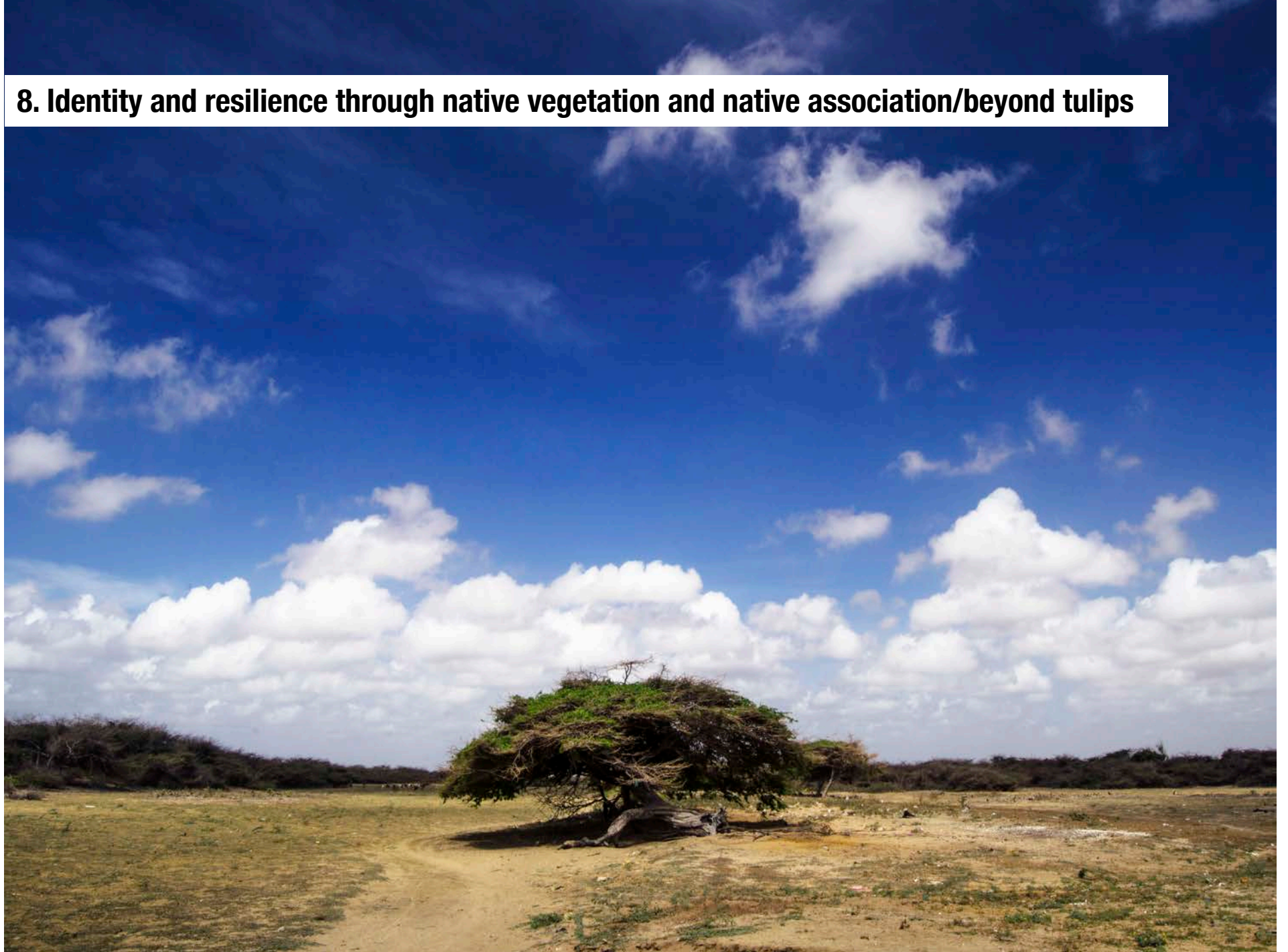
6. Representation and presentation tools capable of metamorphosis/non realistic x-rays



7. Non numerical indicators of success / the value of immaterial testimony



8. Identity and resilience through native vegetation and native association/beyond tulips



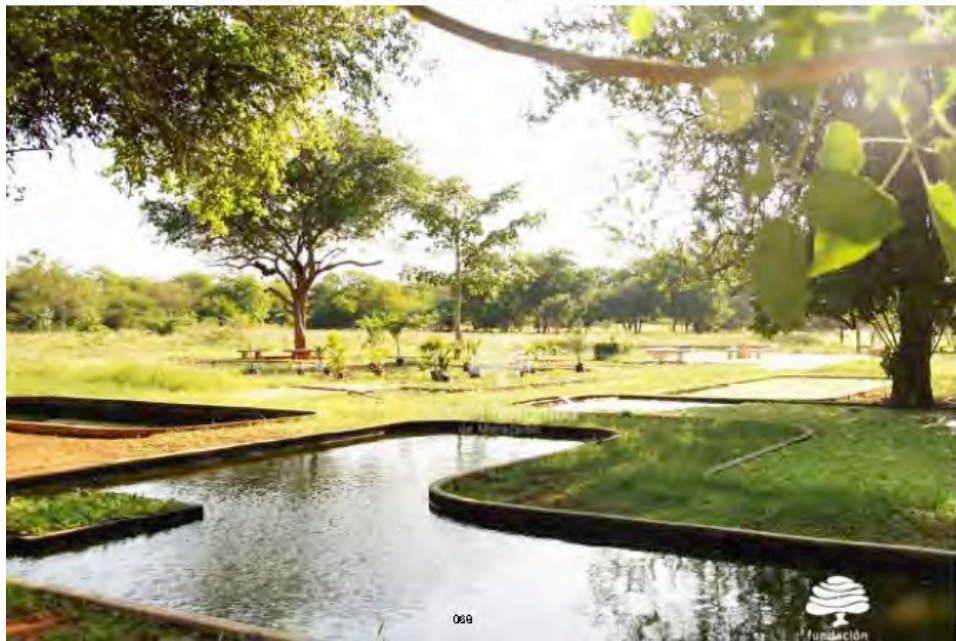
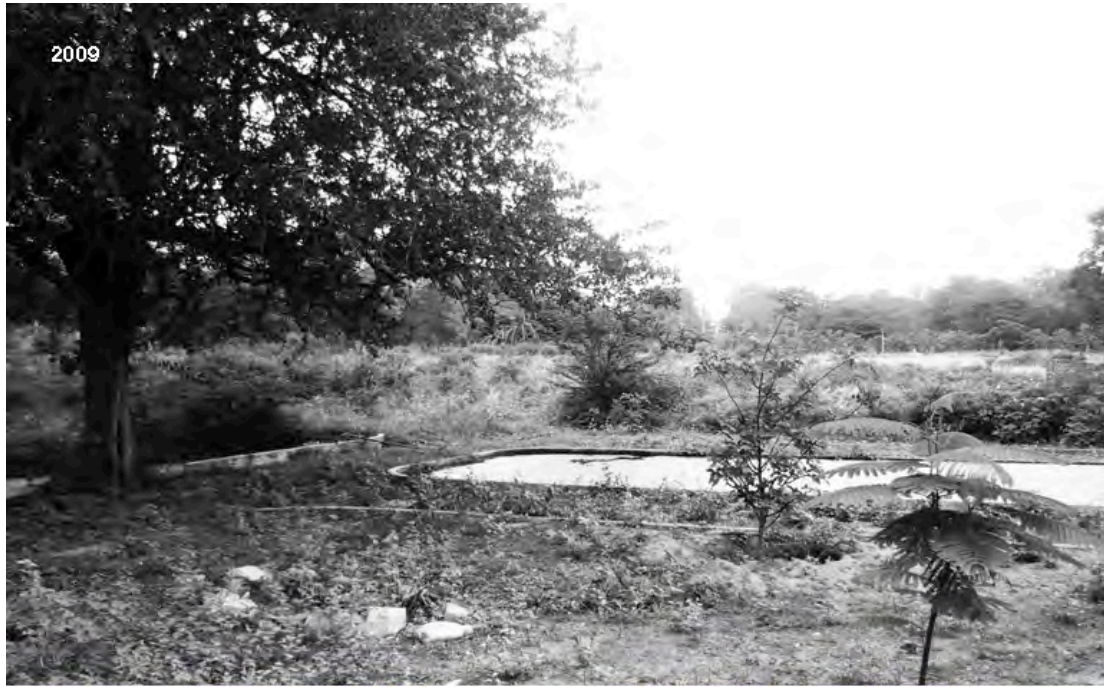
9. Productive ethnological engagements with the landscape/local production and transformation



10. Simultaneity of phases of development/non lineal progression







System of pedagogical atmospheric cultural thresholds

